

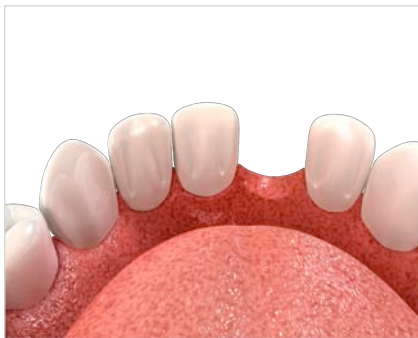


Dentapreg™

Space Maintainer Anterior

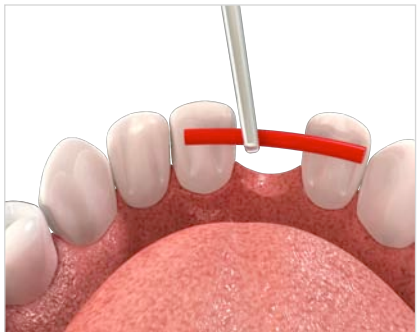
Creating space maintainer with Dentapreg™ strip always includes several basic procedures repeated in all particular clinical situations:

- Clean the bonding surface of abutment teeth
- Maintain dry field during all procedures of placement the space maintainer
- Acid etch the bonding surface using common commercial etching gels or liquids
- Apply thin layer of a desired adhesive
- Form and bond Dentapreg™ space maintainer, cure it
- Mask the space maintainer and finish it



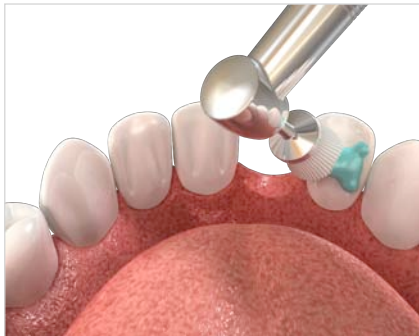
Step 1: Place the Rubber Dam

- Assure dry field by placing the rubber dam etc.
-



Step 2: Measure the Length

- Measure the required length of the Dentapreg™ strip using dental floss or wax. The length of the strip should be slightly longer than the final length of the framework to accommodate for the adaptation.
-



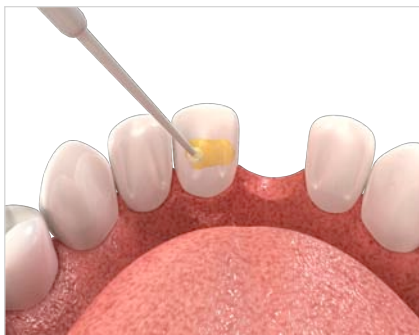
Step 3: Clean the teeth

- Clean the teeth with tooth-brush and tooth paste, wash them and dry with air.
-



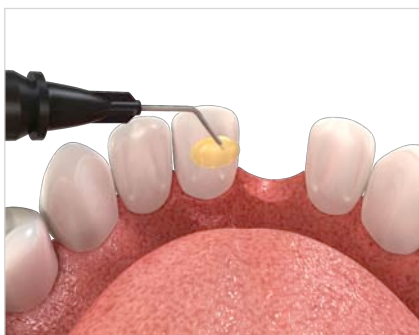
Step 3: Etch the Teeth

- Etch the bonding surfaces.
-



Step 4: Apply Adhesive

- Apply consecutive coat(s) of adhesive to the abutments surfaces. Follow the adhesive manufacturer's instructions. Do not light cure!
-



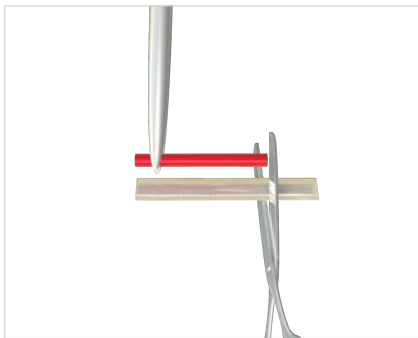
Step 5: Apply Flow Composite

- Apply a thin layer of hybrid/flowable composite on abutments. Do not light cure!
-



Step 6: Open the Blister

- Separate the single strip from the blister breaking the perforated ligament similarly to blister packaged drugs.
-



Step 7: Cut the Strip

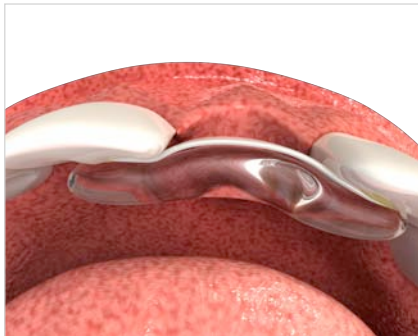
- Remove the strip from the blister, cut the strip with regular scissors.
 - Place the rest of leftover trimmed strip back into the blister and re-cover with foil. This will prevent premature polymerization of the strip.
-



Step 8: Peel Back the Waxed and Transparent Foil

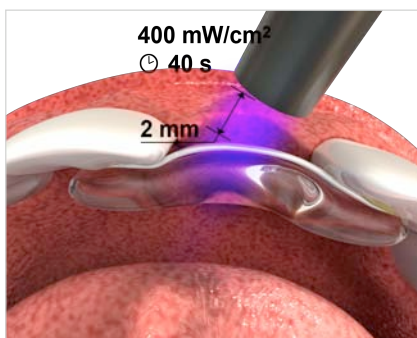
- Peel back the waxed paper and transparent foil.
-





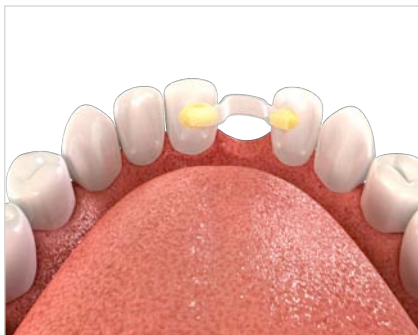
Step 9: Adaptation of the Strip

- Gently press Dentapreg™ strip on the bonding places against abutment teeth.
- You can use silicon key to hold the strip in required position.



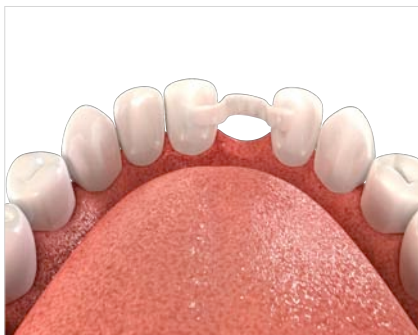
Step 10: Light Cure the Strip

- Light cure each end of the strip. When using common halogen light curing lamp light cure each end for 40 seconds. With LED lamp cure each end for 20 seconds. Cure the rest of the strip for minimum of 40 seconds.



Step 11: Mask the Strip

- Apply hybrid/flowable composite to outer parts of the space maintainer.
- Light cure the hybrid/flowable composite according to manufacturer's instructions.



Step 12: Final Space Maintainer

- Finished space maintainer.

All rights reserved ©
ADM a.s., U Vodárny 2, 616 00 Brno, Czech Republic
www.dentapreg.com